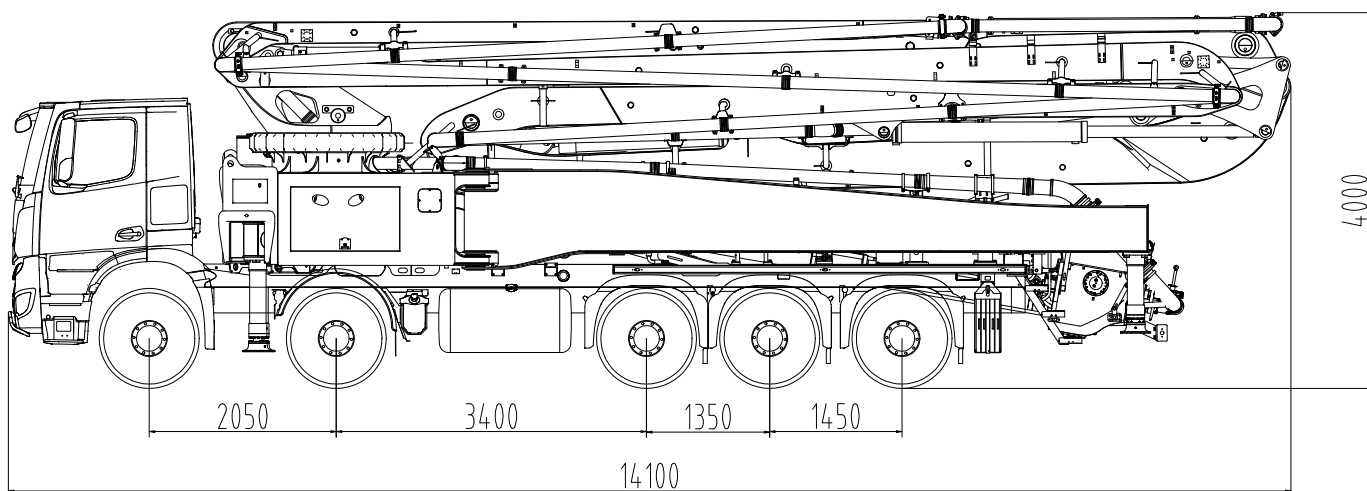


## Truck-mounted concrete pump

## SY56 RZ6-200

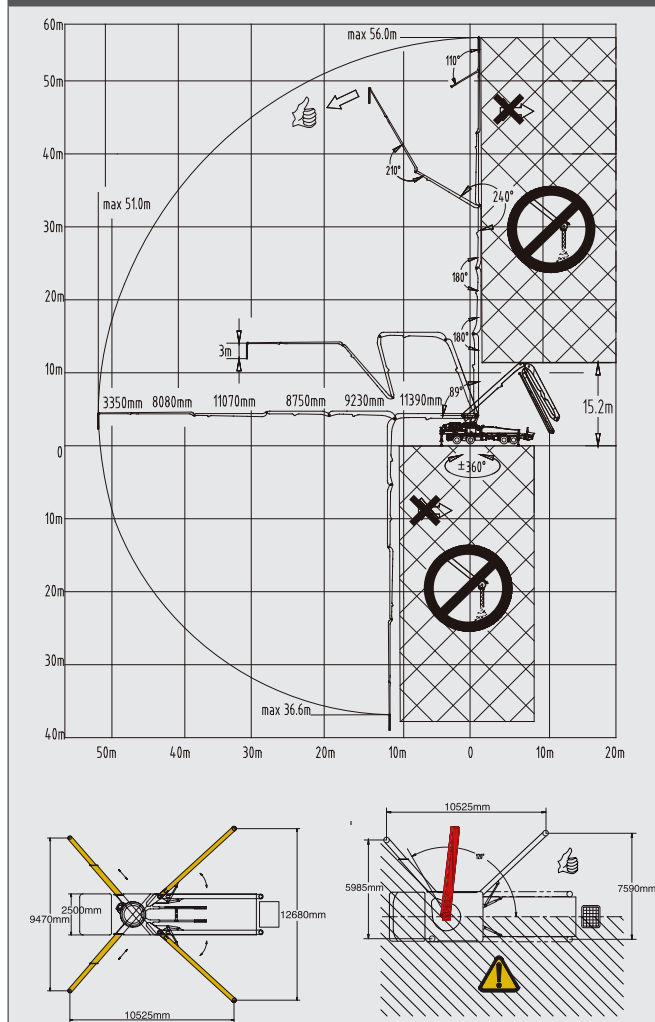


Note: Standard version. Dimensions and weights depend on truck, pump model and equipment. For illustration only.

### Technical data

Boom	Folding system	6-arm RZ
	Vertical reach	56.0 m
	Horizontal reach	51.0 m
	Reach depth	36.6 m
	Unfolding height	15.2 m
	End hose length	3 m
Support	Outrigger spread front	9.5 m
	Outrigger spread rear	12.7 m
Dimensions	Overall length	14.1 m
	Width	2.55 m
	Height	4.0 m
Core pump	Output	160 m <sup>3</sup> /h
	Pressure	85 bar
	Strokes/min	26
	Delivery cylinder Ø	260 mm
	Stroke length	1900 mm

### Reach diagram / support



Standard Equipment SY56 RZ6-200				
Chassis	Transfer Gear Box		Safety	Chassis horn via remote control on hopper
	Towing eye			Handrail on rearsteps
Cleaning	Water tank 600 l			Horn at the boom, button on rear controlbox
	Water pump 150 l/min 20 bar			Warning device boom not in cradle
Delivery line	2-layer delivery line – DN 125, 5.5"		Addi- tional features	User manual and spare part list
	End hose 3 m DN 125, 5.5"			Stowage Box
Hopper	Concrete hopper with agitator			Painting: pedestal and hopper in RAL 9016 Traffic white
	Central lubrication hopper, hydraulically		Painting: arm assembly and delivery line in RAL 9016 Traffic white	
	Hard metal wear parts kit		EU KIT	Support Stability Control (safety system)
	Switchover cylinder diameter = 100 mm			CE Certification & Documentation
	Agitator safety switch off, lever switch	EU road approval KIT (markers & underrun protection)		
Lighting	Working light for illuminating hopper	Platform aluminum		
	Side marker lamps	Rear steps, left & right side		
Pump	Core pump with 1900 mm stroke	Plastic hopper cover, foldable		
	Delivery cylinder with 260 mm diameter	Vibrator on hopper grid radio remote/on site controlled		
	Core pump with 160 m³/h delivery rate	Available Options		
	Delivery cylinder chrome-plated			
	Delivery piston standard			
Control System	SANY SYLD user interface display			
	SANY SYMC control system			
	Radio remote control propotional			
	2nd radio remote control incl. 40 m cable			
Support	Boom pedestal (X-type outrigger and swing out legs)		End hose with squeezing valve "drop stop"	
	OSS one side support (assistance device)		High Pressure Cleaner	
	Support plates (4x) in magazine (2x) open		Customer Painting in two colors (TIER 2)	
	Swivel support plates			

See quotation for exact serial delivery scope.

Materials and specifications are subject to change without further notice in accordance with our continuous technical innovations. Photos and illustrations may include additional equipment.  
All rights reserved. 2207

## Putzmeister Concrete Pumps GmbH

Max-Eyth-Straße 10 · 72631 Aichtal, Germany  
P.O.Box 2152 · 72629 Aichtal  
Tel. +49 (7127) 599-0 · Fax +49 (7127) 599-520  
pmw@putzmeister.com · www.putzmeister.com