

M27 performance line



Note: Standard version. Dimensions and weights can be changed depending on vehicle, pump and equipment. Dimensions in mm, exemplary for MB Arocs 1835. Illustrations include optional extras.

Advantages of the Performance Line equipment series

- **Familiar Putzmeister quality**
Known performance and quality – Like every Putzmeister machine, the Performance Line models are characterised by **high availability, low operating costs and high part quality.**
- **Standardized configuration**
The equipment of the Performance Line is firmly defined – The configuration includes **all that a concrete pump needs to cope with everyday site work** – special functions and comfort options, for which Putzmeister is known, have deliberately been omitted.
- **Short delivery times and attractive prices**
The models are produced with standardized processes in stock. This limits the variety of options and customer-specific adaptations. For our customers this means – **immediately available, at attractive prices!**

Placing boom M27

Folding type	4-arm Z-folding
Vertical reach	26.4 m
Horizontal reach	22.1 m gross
Depth of reach	16.6 m
Unfolding height	6.7 m
Length end hose	4 m
Delivery lines	DN 125, max. 85 bar
Slewing range	365°

Pump BSF .11H

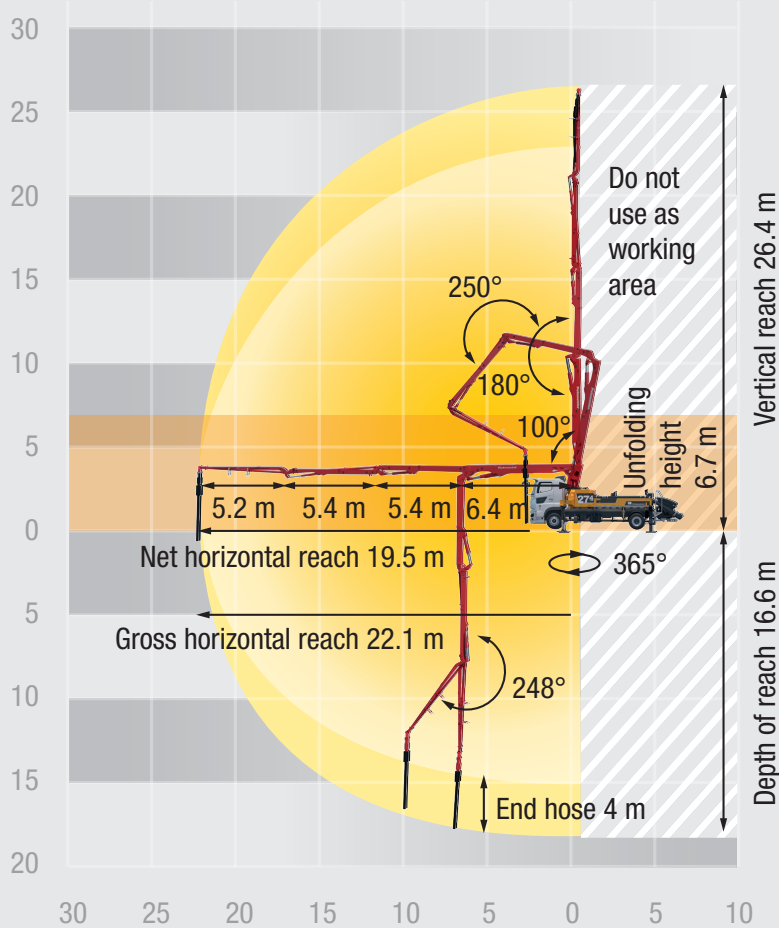
Output	110 m ³ /h
Pressure	78 bar
Stroke	1400 mm
Cylinder Ø	230 mm
Strokes/min	32

ergonic[®]
inside 3

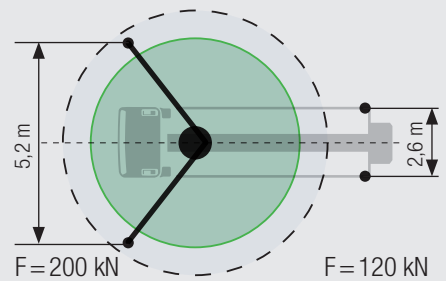
All data represent theoretical maximum values.

M27 *performance line*

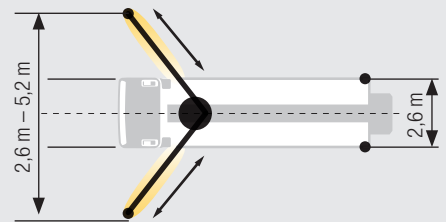
Reach diagram, support



Standard – Full support



iSC-light** – Flexible support



Dimensions can differ depending on configuration.
Support width based on center of support leg.
Diameter of swivel plate 270 mm.

** EEA, CE marking

Serial equipment Performance Line

11H incl. standard pistons	Ergonic 3.0	Vibrator
Paintwork: arctic white (MB9147)	Control lighting	Storage box painted
Delivery line (2-layers)	Europe KIT	High pressure water pump

Options

End hose squeeze valve
Cable remote control
Underride guard
PM Connectivity

Putzmeister Concrete Pumps GmbH

Max-Eyth-Straße 10 · 72631 Aichtal · Germany
P.O.Box 2152 · 72629 Aichtal · Germany
Tel. +49 (7127) 599-0 · Fax +49 (7127) 599-520
pmw@putzmeister.com · www.putzmeister.com

