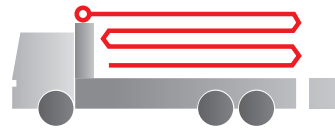


# Truck-mounted concrete pump

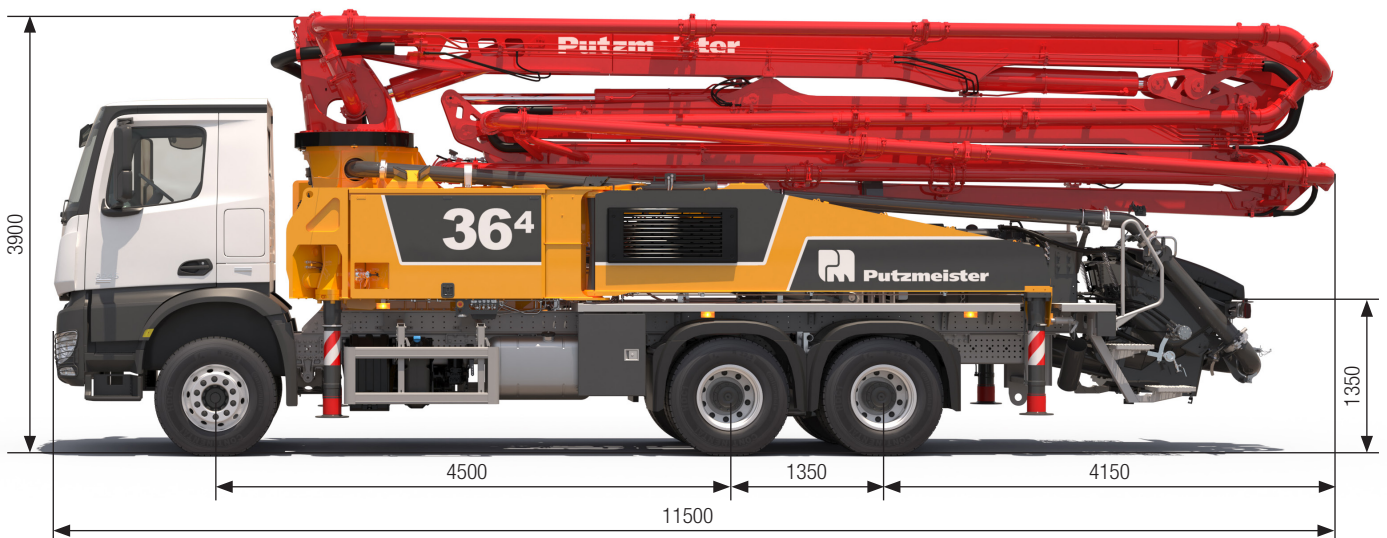
# BSF 36-4.16 H

.17 i LS

Output up to 170 m<sup>3</sup>/h  
Delivery pressure up to 130 bar\*



**ergonic<sup>®</sup>**  
inside **3**



Note: Standard version. Dimensions and weights depend on truck, pump model and equipment.  
Dimensions in mm for MB-Actros 3243.  
Illustrations show special equipment

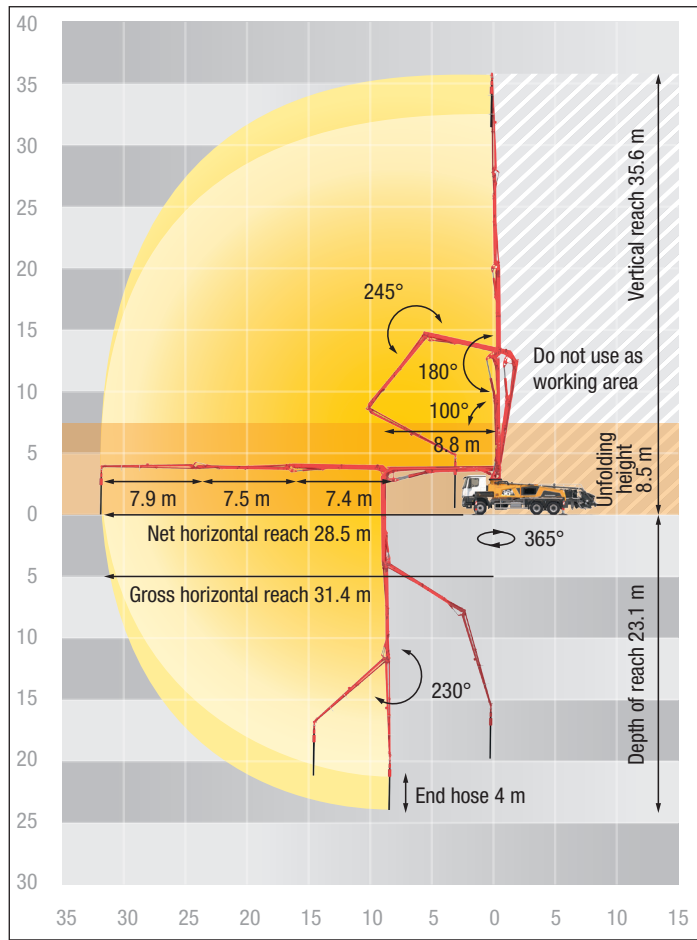
## Technical data

| Boom M 36-4      |       |        |
|------------------|-------|--------|
| Sections         |       | 4      |
| Reach height     | m     | 35.6   |
| Horizontal reach | gross | m 31.4 |
|                  | net   | m 28.5 |
| Reach depth max. | m     | 23.1   |
| Unfolding height | m     | 8.5    |
| End hose length  | m     | 4      |
| Folding system   |       | Z      |
| Delivery line    |       | DN 125 |

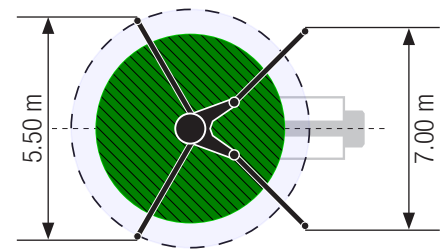
| Pump        |                   | BSF               | .16 H | .17 i LS |
|-------------|-------------------|-------------------|-------|----------|
| Rod side    | Output            | m <sup>3</sup> /h | 160   | -        |
|             | Delivery pressure | bar               | 85    | -        |
|             | Strokes           | 1/min.            | 31    | -        |
| Piston side | Output            | m <sup>3</sup> /h | 108   | 170      |
|             | Delivery pressure | bar               | 130   | 85       |
|             | Strokes           | 1/min.            | 21    | 27       |
|             | Delivery cylinder | Ø mm              | 230   | 250      |
|             | Stroke            | mm                | 2100  | 2100     |

\*) Delivery line boom max. 85 bar.  
All data maximum theoretical.

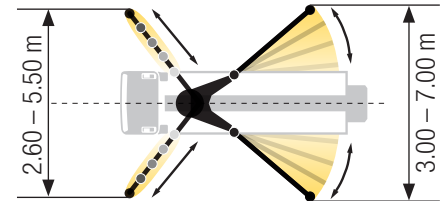
## BSF 36-4 Reach information diagram, Support



### Standard – Full support



### iSC – Flexible support



Dimensions can differ depending on configuration.  
Support width based on center of support leg.

## Delivery scope Standard Line

### Support

Full support system  
Support plates (4x), in 2 magazines

### Control systems

Agitator, controllable via remote control or local  
EOC 2.0 (Ergonic Output Control)  
Ergonic 3 control system  
Ergonic Graphic Display 9.7" incl. Ergonic diagnosis interface  
Radio remote control with display

### Hopper

Agitator rotation automatic, dep. on pump direction  
Agitator safety switch off (RFID)  
Central hopper lubrication, electric  
Delivery cylinder, chrome-plated  
Hinged elbow with cleaning port  
Rubber collar on concrete hopper  
Spectacle wear plate DURO 22

Steps left and right, zinc-plated  
S-valve transfer switchover fast/slow  
Wash-out port lid with locked slide pin

### Cleaning

Cleaning hose 8 m + 2 m incl. bracket and nozzle  
Compressed air connection, rear side  
Connection for water tank filling, both-sided  
Container for sponge balls  
Operating position at hopper to drain water pipe  
Water outlet on hopper, for small quantities (1/2")  
Water pump, 160 l/min 25 bar  
Water tank 700 l

### Delivery line

Deck delivery line in boom delivery line quality  
Delivery line PROLINE 1000 (1-layer)  
End hose 4 m DN125

### Safety

Connections for hydraulic emergency supply (boom)  
Guardrail right side  
Mushroom button for horn, yellow  
Towing eye

### Lighting

Control points lighting, LED  
Hopper lighting, LED  
Light for illumination pump and water box, LED  
Lighting of control box, LED

### Miscellaneous

Delivery note box plastic  
Hydraulic hose for replacement in hose pack  
Operating instruction and spare parts manual (1x paper, 1x CD-ROM)  
Paintwork Putzmeister Standard  
Tool kit