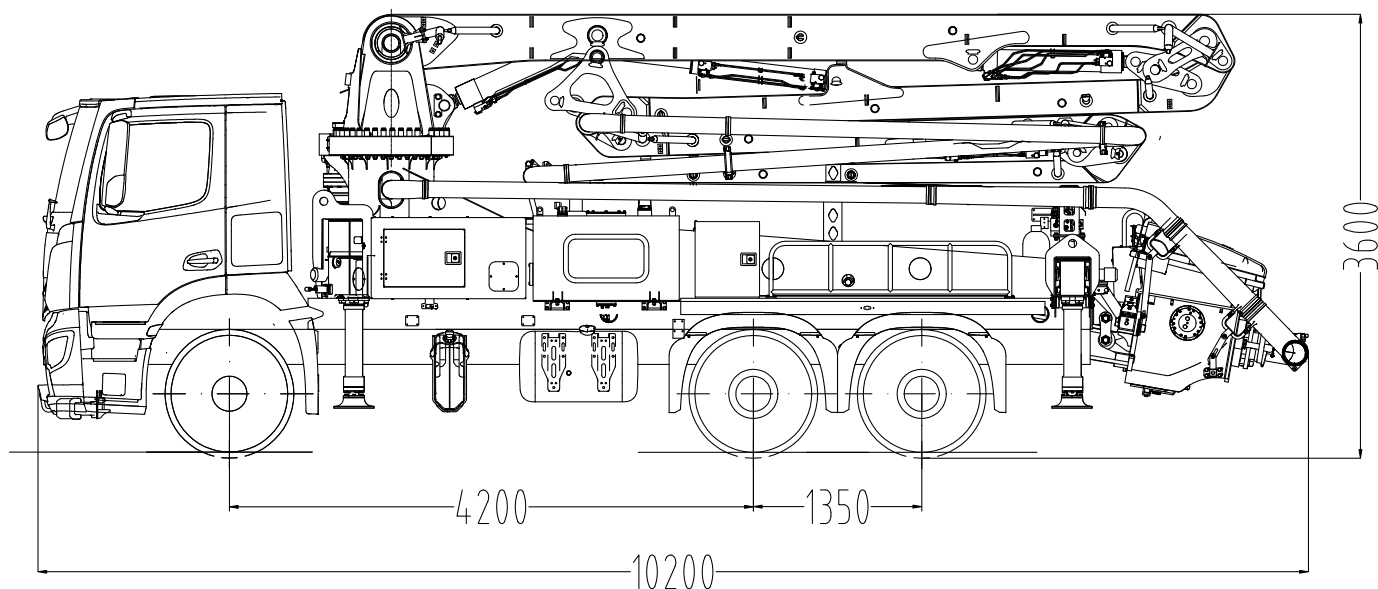


Truck-mounted concrete pump

SY25 Z4-150

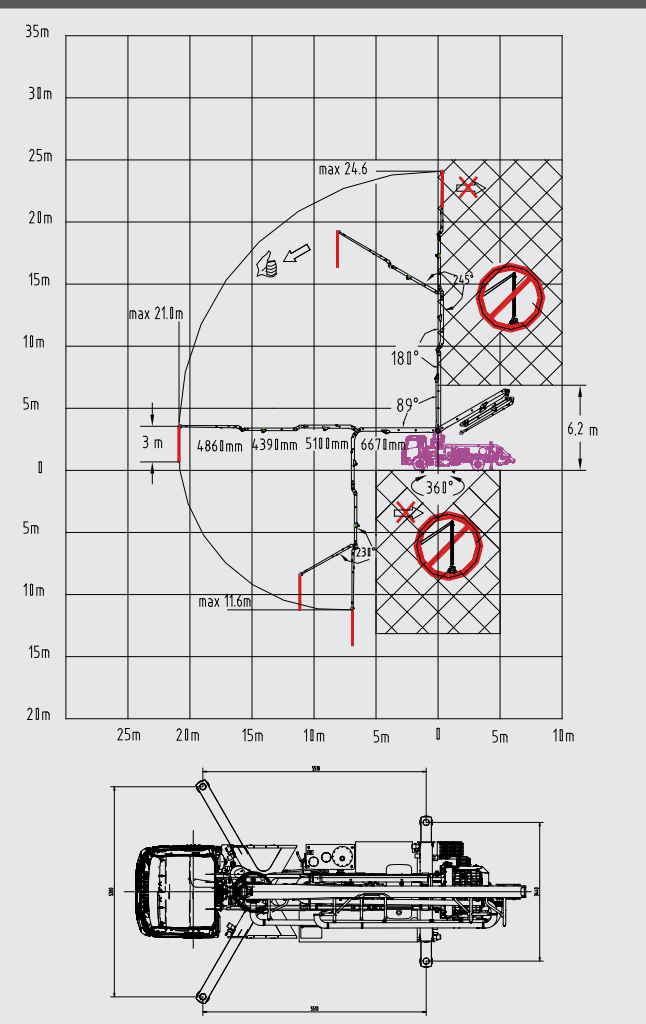


Note: Standard version. Dimensions and weights depend on truck, pump model and equipment. For illustration only.

Technical data

Boom	Folding system	4-arm Z
	Vertical reach	24.6 m
	Horizontal reach	21.0 m
	Reach depth	11.6 m
	Unfolding height	6.2 m
	End hose length	3 m
Support	Outrigger spread front	5.2 m
	Outrigger spread rear	3.4 m
Dimensions	Overall length	10.2 m
	Width	2.5 m
	Height	3.6 m
Core pump	Output	120 m ³ /h
	Pressure	70 bar
	Strokes/min	30
	Delivery cylinder Ø	230 mm
	Stroke length	1600 mm

Reach diagram / support



Standard Equipment SY25 Z4-150				
Chassis	Transfer Gear Box		Safety	Chassis horn via remote control on hopper
	Towing eye			Handrail on rearsteps
Cleaning	Water tank 400 l			Horn at the boom, button on rear controlbox
	Water pump 150 l/min 20 bar			Warning device boom not in cradle
Delivery line	2-layer delivery line – DN 125, 5.5"		Additional features	User manual and spare part list
	End hose 3 m DN 125, 5.5"			Stowage Box
Hopper	Concrete hopper with agitator			Painting: pedestal and hopper in RAL 9016 Traffic white
	Central lubrication hopper, hydraulically		Painting: arm assembly and delivery line in RAL 9016 Traffic white	
	Hard metal wear parts kit		EU KIT	Support Stability Control (safety system)
	Switchover cylinder diameter = 100 mm			CE Certification & Documentation
	Agitator safety switch off, lever switch			EU road approval KIT (markers & underrun protection)
Lighting	Working light for illuminating hopper			Platform aluminum
	Side marker lamps		Rear steps, left & right side	
Pump	Core pump with 1600 mm stroke		Plastic hopper cover, foldable	
	Delivery cylinder with 230 mm diameter		Vibrator on hopper grid radio remote/on site controlled	
	Core pump with 120 m³/h delivery rate			
	Delivery cylinder chrome-plated			
	Delivery piston standard			
Control System	SANY SYLD user interface display		Available Options	
	SANY SYMC control system			
	Radio remote control propotional			
	2nd radio remote control incl. 40 m cable			
Support	OSS one side support (assistance device)	End hose with squeezing valve "drop stop"		
	Support plates (4x) in magazine (2x) open	High Pressure Cleaner		
	Swivel support plates	Customer Painting in two colors (TIER 2)		

See quotation for exact serial delivery scope.

Materials and specifications are subject to change without further notice in accordance with our continuous technical innovations. Photos and illustrations may include additional equipment.
All rights reserved. 2207

Putzmeister Concrete Pumps GmbH

Max-Eyth-Straße 10 · 72631 Aichtal, Germany
P.O.Box 2152 · 72629 Aichtal
Tel. +49 (7127) 599-0 · Fax +49 (7127) 599-520
pmw@putzmeister.com · www.putzmeister.com